

## Blessed Sacrament Morning Car Line Procedures

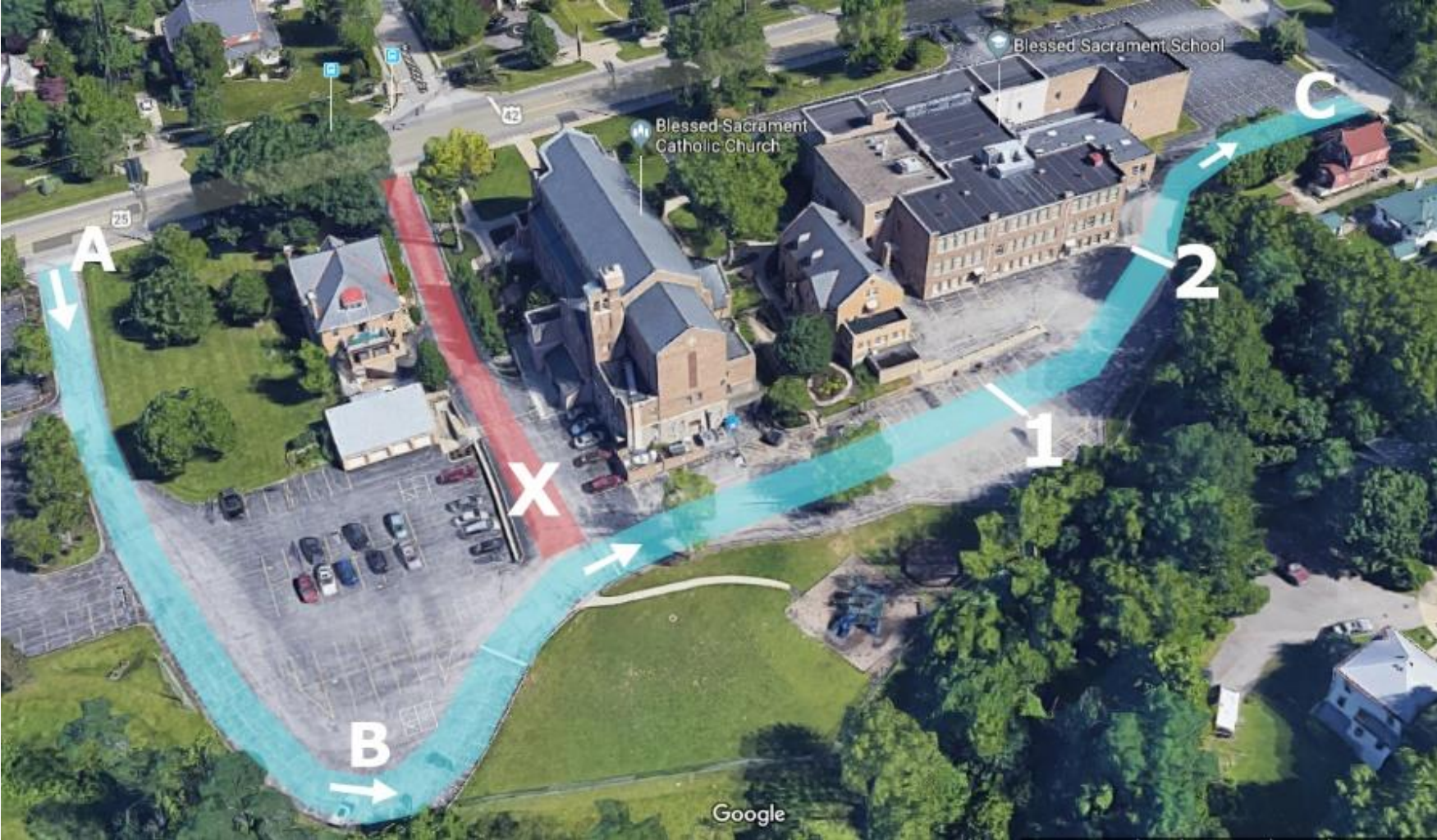
Please read these reminders carefully, as they will help keep everyone safe and moving through as quickly as possible. The letters and numbers reference the picture below.

- A.** Enter from Dixie Highway near the Blessed Sacrament digital parish sign. Follow the blue path in the image below at all times.
  - i. As the parking lot begins to widen at the base of the driveway, stay in a single-file line.
  
- B.** Stick to the edge of the parking lot as you wrap around. The path is marked by a solid white line and is highlighted in blue in the picture below. Sticking to the edge allows us to have more cars in our lot and off of Dixie Highway.
  - i. Do not use the driveway between the church and priest house (marked in red). This path must be clear for the buses to use and unload safely.

Continue forward. If you reach line 2, stop. If you are stopped between line #1 and line #2, have your children exit the vehicle. It is important that we unload as many cars as possible at one time to keep it moving.

- C.** When you reach Idaho avenue (C), cars turning right onto Dixie may turn left onto Idaho (this span can only hold about 4 – 5 cars). Cars that need to turn left onto Dixie should turn right on Idaho, left on Oak, and left on Highland to get to a traffic light. Please see the image with the green path below.

# Blessed Sacrament Car Line Procedures





# BSS Car Line – Exit to Light on Highland

